

All The Mods 10

Guides and tutorials for ATM10!

- [Introduction | ATM10](#)
- [AllTheModium Ores Guide | ATM10](#)
- [SiriusMC's ATM Star Guide | ATM10](#)
- [Mekanism Fission Reactor | ATM10](#)

Introduction | ATM10



atm10.siriusmc.net

Version · 6.6

All The Mods 10 (ATM10) is a massive Minecraft modpack featuring 470+ mods and a comprehensive quest system to guide your progression. Designed for long-term gameplay, ATM10 includes a built-in endgame goal in the form of the ATM Star, a powerful craftable item that requires mastery of many of the pack's mods to complete. Whether you enjoy technology, magic, exploration, or a mix of everything, ATM10 has a path for you.

Key Features

Technology and Magic

ATM10 covers both technical and magical play styles in depth. On the tech side, mods like Mekanism, Applied Energistics 2, Thermal Expansion, and Create provide deep automation, power generation, and storage systems. On the magic side, Botania, Blood Magic, Ars Nouveau, and Mahou Tsukai offer entirely different progression paths. Both sides of the pack are fully fleshed out and can be pursued independently or combined for more powerful setups.

Exploration and Dimensions

ATM10 expands the world significantly with new biomes, structures, and dimensions to explore. The Mining World provides a dedicated resource dimension that resets weekly, keeping the Overworld pristine for long-term builds. Additional dimensions such as the Twilight Forest, The Other, the Undergarden, the Bumblezone, and the Deeper Dark each offer unique environments, mobs, and loot.

The ATM Star

The ATM Star is the endgame goal of ATM10. Crafting it requires progressing deeply into many of the pack's mods and obtaining some of the most difficult materials in the game. It is a long-term challenge that gives the entire playthrough direction and purpose, with creative-tier rewards for those who complete it.

If you'd like to see an interactive ATM Star guide, see our [SiriusMC ATM Star Guide](#).

Beginner Tips and Tricks

Vein Miner (Ultimine)

ATM10 includes the Ultimine mod, commonly referred to as Vein Miner. It allows you to mine multiple blocks of the same type at once, making early resource gathering significantly faster. It also supports mining large 3x3 tunnels or staircases, which is useful for reaching lower Y levels where better materials are found.

Finding Biomes and Structures

Two compasses make navigation in ATM10 much easier. Nature's Compass lets you search for any biome in the game and points you toward it with a distance readout. Explorer's Compass works the same way but for locating generated structures. Both are cheap to craft and should be made early.

Early Power Generation

Mekanism wind generators are one of the best early power sources in ATM10. They require no fuel and generate energy passively as long as they are placed. The higher you build them, the more power they produce, so always place them as high as possible. They are an accessible and reliable way to power your early machines before you have the resources for more advanced generation methods.

Getting Started



ATM10 can feel overwhelming at first. With hundreds of mods included, knowing where to begin isn't always obvious. The best starting point is the quest book, found in the top-left corner of your inventory screen. It walks you through the pack step by step, introduces the different mods in a structured way, and rewards you for completing each quest to give you a helpful early boost. Following the quest book is the approach we recommend to all new players on SiriusMC.

Play style	Where to Start
Technology	Start with Mekanism for early power generation and ore processing, then move into Applied Energistics 2 for storage and autocrafting as your base grows.
Magic	Begin with Ars Nouveau or Botania for accessible early magic progression, then branch into Blood Magic or Mahou Tsukai for more complex and powerful systems.
Exploration	Head into the Twilight Forest early for structured dungeon progression, then work toward the Mining World and other dimensions for unique resources later in the game.
Endgame	Work toward crafting the ATM Star. This requires deep progression across many of the pack's mods and is the ultimate long-term challenge ATM10 has to offer.

To install ATM10 and learn more about banned items, scheduled restarts, and dimension resets, visit the [ATM10 Server Card](#).

It is recommended to allocate between 8GB and 10GB of RAM for ATM10.

SiriusMC bans certain items to protect server performance, the in-game economy, and claimed player bases. Use **/banneditems** in-game to see the full list of banned items on the server, or expand the Banned Items list below.

Banned Items ?

Item-based chunk loaders

All tick speed up items

Ender drives

Paradox machine

Explosives

Various Mahou Tsukai staffs

Time/weather manipulation items

Ready to Play?

Open Minecraft, select Multiplayer, and add a new server with the address below.

```
atm10.siriusmc.net
```

[Installation guide](#)

[Server rules](#)

[Join Discord](#)

Guide

[AllTheModium Ores Guide](#)

ATM10 features a tier progression system of unique ores beyond Netherite. This guide shows you where to find them, and how to use them.

Guide

[SiriusMC's ATM Star Guide](#)

SiriusMC's guide to obtaining the ATM star.

Guide

[Mekanism Fission Reactor](#)

A helpful guide on creating a fission reactor from the mod Mekanism.

AllTheModium Ores Guide | ATM10

ALL THE
10
MODS

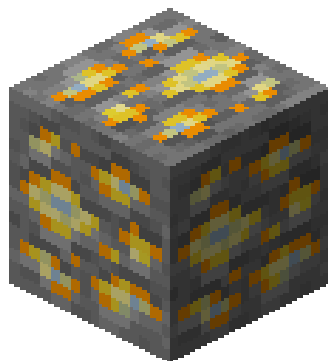
atm10.siriusmc.net

Version · 6.6

ATM10 features a tier progression system of unique ores beyond Netherite, each found in different dimensions and requiring increasingly powerful tools to mine. The progression order is:

Netherite (Vanilla) → AllTheModium → Vibranium → Unobtainium

AllTheModium

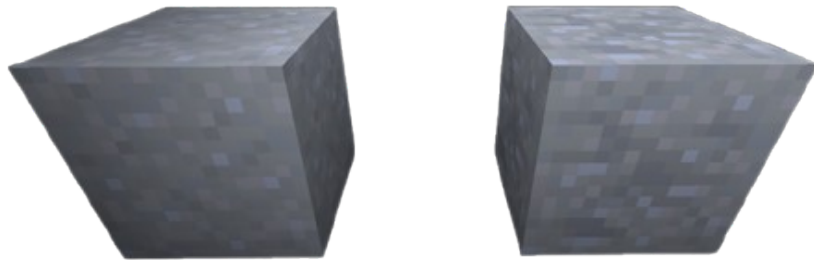


AllTheModium ore can be found in the [Deep Dark](#) biome in the Overworld, or in the Mining dimension added by [Aroma1997's Dimensional World](#). In the Deep Dark, look on the walls and roof of caverns or within [Ancient Cities](#). In the Mining dimension, focus on the [Deepslate layer](#).

- Requires [Netherite](#) quality tools or better to mine.
- Found in the [Deep Dark](#) biome in the Overworld.
- Found in the Mining dimension at the [Deepslate layer](#).

Finding the AllTheModium Smithing Template

Use a [Brush](#) on [Suspicious Clay](#) blocks inside [Ancient Cities](#). Suspicious Clay looks similar to regular clay but has a slightly different texture.



Smithing Upgrade

Slot	Item
Template	AllTheModium Smithing Template
Gear	Netherite tool or armour piece
Material	AllTheModium Ingot

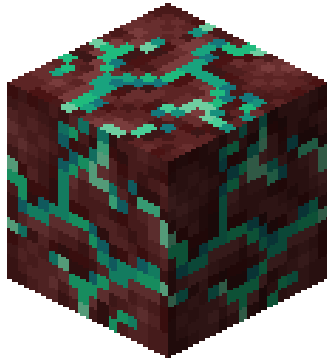


Duplicating the Template

Ingredient	Amount
AllTheModium Smithing Template	1
Netherite Ingot	7
Deepslate	1



Vibranium



Vibranium ore can only be found in the [Crimson Forest](#) and [Warped Forest](#) biomes of the Nether. The Crimson Forest is characterised by red fungi and hoglins, while the Warped Forest is teal-coloured and generally safer to explore. Vibranium spawns at high Y altitudes; look near the Nether ceiling rather than the floor.

- ❑ Requires AllTheModium quality tools or better to mine.
- ❑ Found in the [Crimson Forest](#) and [Warped Forest](#) biomes of the Nether.
- ❑ Spawns at high Y altitudes, normally near the ceiling.

Finding the Vibranium Smithing Template

Use a Brush on [Suspicious Soul Sand](#) inside [Bastion Remnants](#) in the Nether. Bastions are large blackstone fortress structures home to Piglins and Piglin Brutes. Bring gold armour to avoid aggravating the Piglins. Suspicious Soul Sand can be found on the floors and in treasure rooms.



Smithing Upgrade

Slot	Item
Template	Vibranium Smithing Template
Gear	AllTheModium tool or armour piece
Material	Vibranium Ingot

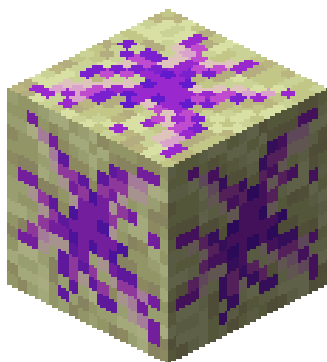


Duplicating the Template

Ingredient	Amount
Vibranium Smithing Template	1
AllTheModium Ingot	7
Ancient Stone	1



Unobtainium



Unobtainium ore can only be found in the [End Highlands](#), the outer islands of The End dimension. To reach the outer islands, travel through the End Gateway portal that appears after defeating the Ender Dragon, or fly away from the main island. The Highlands biome is identifiable by its elevated terrain and chorus plants. Unobtainium spawns within the island's crust at any Y level, so you can find it by searching on the surface.

- Requires Vibranium quality tools or better to mine.
- Found in the [Highlands biome](#) within [The End](#).
- Spawns within the island's crust at any Y level.

Finding the Unobtainium Smithing Template

Loot chests within the **Library of Dungeons**, large underground dungeon structures found in The Other dimension. Explore thoroughly as chests can be spread across multiple rooms within the structure.

Smithing Upgrade

Slot	Item
Template	Unobtainium Smithing Template
Gear	Vibranium tool or armour piece
Material	Unobtainium Ingot



Duplicating the Template

Ingredient	Amount
Unobtainium Smithing Template	1
Vibranium Ingot	7
End Stone	1



Other Methods of Obtaining These Ores

Method A: Laser Drills

Using [Laser Drills](#) and [Laser Bases](#) from [Industrial Foregoing](#) with the correct [Laser Lens](#) in the correct biomes can generate the respective ore for that biome.

Method B: Mystical Agriculture

Seeds from [Mystical Agriculture](#) can produce [Essence](#) of these ores, which can then be converted into ingots.

Method C: Productive Bees

Bees from the [Productive Bees](#) mod can produce combs of these ores, which can be converted into ingots using a centrifuge.

Guide

[SiriusMC's ATM Star Guide](#)

SiriusMC's guide to obtaining the ATM star.

Guide

[Mekanism Fission Reactor](#)

A helpful guide on creating a fission reactor from the mod Mekanism.

Introduction

[Introduction](#)

An introduction into ATM10, including how to get started and what mods are featured.

SiriusMC's ATM Star Guide | ATM10

This guide covers the complete ATM Star recipe for All the Mods 10 (ATM10). The ATM Star is the endgame item crafted at the Runic Star Altar, requiring 8 unique components and 3 ATM Alloys sourced from dozens of mods. Use the interactive guide below to see every ingredient for each component.



ATM Star Crafting Guide

All the Mods 10 — Crafted at the Runic Star Altar

Expand each component below to see its ingredients by clicking on the card



Dragon Soul ?

- Apothic Enchanting · Infused Breath
- Occultism · Soul Gem
- Occultism · Familiar Dragon Spawn Egg
- Productive Trees · Socotra Dragon Sapling
- Hostile Networks · Ender Dragon Data Model
- Allthemodium · Piglich Heart Block
- Productive Bees · Soul Lava Bee Spawn Egg
- Cataclysm · Abyssal Sacrifice
- Eternal Starlight · Chain of Souls



Improbable Probability Device ?

- Mekanism · Antimatter Pellet

AE2 · Singularity

Megacells · 256m Portable Item Cell

Pneumaticcraft · Aerial Interface

Iron Furnaces · Million Furnace

Iron's Spellbooks · Lightning Upgrade Orb



Dimensional Seed ?

Allthecompressed · Netherrack x6

Allthecompressed · Dirt x6

Allthecompressed · Obsidian x5

Miniature Exit

Miniature Nether

Miniature End

Allthecompressed · End Stone x5

Allthecompressed · Emerald Block x4

Allthecompressed · Diamond Block x4

Sub-components: Miniature Portals



Miniature Nether

- ? Obsidian
- ? Nether Star
- ? Hellshelf of Masterful Sight
- ? Wither Skeleton Skull
- ? Warped Nylium



Miniature End

- ? Apothic Enchanting Endshelf
- ? Ender Eye
- ? Apothic Enchanting Draconic Endshelf



Miniature Exit

- ? Dragon Egg
- ? Apothic Enchanting Infused Breath
- ? Soul Touched Sculkshelf
- ? End Crystal



Wither's Compass ?

Productive Bees · Withered Configurable Comb

Industrial Foregoing · Wither Builder

Deeper Darker · Heart of the Deep

Generator Galore · Netherstar Generator x64

Iron's Spellbooks · Wither Skull Scroll

Mystical Agriculture · Witherproof Bricks

Tipped Arrow (Wither Potion)

Ars Nouveau · Wither Glyph

Mystical Agradditions · Nether Star Crux



Philosopher's Fuel ?

Generator Galore · Ender Generator

Iron Furnaces · Rainbow Coal

Big Reactors · Insanite Block

Modern Industrialization · Uranium Fuel Rod Quad

Mystical Agradditions · Insanium Coal Block

Forbidden Arcanus · Smelter Prism

Mystical Agriculture · Awakened Supremium Ingot Block

Generator Galore · Magmatic Generator x64

Evil Craft · Dark Tank + JDT Refined T4 Fluid Source



Nexium Emitter ?

Powah · Nitro Player Transmitter

AE2 · Wireless Universal Terminal

Mekanism · Gravitational Modulating Unit Module

Modern Industrialization · Large Advanced Motor

Immersive Engineering · Tesla Coil

Advanced AE · Quantum Multi Threader

AE · Infinity Booster Infinity Card



Oblivion Shard ?

- Forbidden Arcanus · Eternal Stella
- Evil Craft · Mace of Destruction (with Blood)
- Evil Craft · Piercing Vengeance Focus
- Steve's Carts · Galgadorian Drill
- Cataclysm · Meat Shredder
- Twilight Forest · Snow Queen Trophy
- Cataclysm · Void Forge



Pulsating Black Hole ?

- Iron's Spellbooks · Fire Upgrade Orb
- AE2 · Quantum Ring
- Pneumaticcraft · Micromissiles
- Just Dire Things · Paradox Machine
- Pocket Storage · PSU 4
- Occultism · Stable Wormhole
- Roots Classic · Crystal Staff
- Industrial Foregoing · Mycelial Explosive
- Evil Craft · Lightning Bomb

ATM Alloys — Required for the Star



Vibranium-Allthemodium Alloy

via [Powah Energizing Orb](#)

- Allthemodium Ingot
- Vibranium Ingot
- Piglich Heart x2
- Compressed Nitro Crystal Block

1,000,000,000 FE required



Unobtainium-Allthemodium Alloy

via [Ars Nouveau Enchanting Apparatus](#)

- Allthemodium Ingot
- Unobtainium Ingot
- Piglich Heart x2
- Air / Earth / Fire / Water Essence

10,000 Source required



Unobtainium-Vibranium Alloy

via [Industrial Foregoing Dissolution Chamber](#)

- Vibranium Ingot
- Unobtainium Ingot
- Pink Slime x4
- Piglich Heart x2

100mb Soul Lava required



ATM Star

Crafted at the [Runic Star Altar](#)

8 Unique Components

3 ATM Alloys

Multiple Dimensions

Dozens of Mods

Guide

[AllTheModium Ores Guide](#)

ATM10 features a tier progression system of unique ores beyond Netherite. This guide shows you where to find them, and how to use them.

Guide

[Mekanism Fission Reactor](#)

A helpful guide on creating a fission reactor from the mod Mekanism.

Introduction

[Introduction](#)

An introduction into ATM10, including how to get started and what mods are featured.

Mekanism Fission Reactor | ATM10

The Fission Reactor is a multiblock structure, in the Mekanism mod, used to generate large amounts of power by burning nuclear fuel. It produces heat which converts water into steam for power generation, and generates nuclear waste as a by-product.

Requirements

Reactor Components

- Fission Reactor Casing
- Fission Reactor Port
- Fission Fuel Assembly
- Control Rod Assembly
- Reactor Glass (optional)

Supporting Systems

Coolant Supply

A constant water source is required. Options include:

- Sink (recommended)
- Mechanical Pipes (the longer the pipes, the more water is available to pump into the multiblock)
- Eternal Water Block (EvilCraft)

Fuel Production

Fission Fuel must be produced through a chemical chain:

Uranium → Uranium Hexafluoride → Fission Fuel

Required machines:

- Chemical Oxidizer

- Chemical Infuser
- Isotopic Centrifuge

Waste Handling

- Pressurized Tubes
- Radioactive Waste Barrel (temporary storage)

Structure

Construction Steps

1. Build the Outer Casing

To begin, construct a **5x5x5 hollow cube** using Fission Reactor Casing. 5x5x5 is the smallest a Fission Reactor can be.

2. Install Internal Components

Inside the structure:

- Place **Fission Fuel Assemblies** vertically
- Place **Control Rod Assemblies** directly on top of each fuel assembly

3. Add Ports

Install the following ports on the reactor casing:

- Fuel Input Port
- Coolant Input Port
- Steam Output Port
- Waste Output Port

Additional ports can be added as needed.

4. Optional: Reactor Glass

Replace casing blocks with Reactor Glass for visibility into the reactor interior. The corners of the reactor must be casing blocks to allow for the multiblock to take shape.

Setup

Connections

Connect each port on the reactor casing to its corresponding system using Mechanical Pipes or Pressurized Tubes as appropriate.

Port	Connection
Coolant Input Port	Connect to your water supply. Ensure constant flow at all times.
Fuel Input Port	Pipe Fission Fuel in from your fuel production chain.
Steam Output Port	Extract steam and route it to an Industrial Turbine for power generation.
Waste Output Port	Extract nuclear waste continuously. Store in Radioactive Waste Barrels or process further.

Activation

1. Enable the reactor.
2. Confirm water is flowing.
3. Confirm waste output is connected.

Power Increase

Gradually increase the burn rate. Increasing it too fast can cause the reactor to explode.

Recommended Operating Range

- Temperature: below 800 K
- Burn Rate: 0.5–2.0 mB/t (early setup)

Power Generation

Industrial Turbine (Recommended)

- Converts steam into energy efficiently
- Required for optimal performance

Without a turbine, most generated energy is wasted.

Safety

Meltdown Causes

- Insufficient coolant
- Excessive burn rate
- Waste backup
- Blocked output systems

Safety Guidelines

- Maintain constant water supply
- Ensure waste is continuously removed
- Increase burn rate gradually
- Monitor reactor temperature

Scaling

Increase Output

- Increase burn rate slowly
- Add more fuel assemblies
- Expand reactor size (e.g. $7 \times 7 \times 7$ or larger)

Common Mistakes

- Activating reactor at high burn rate
- Failing to supply enough coolant
- Ignoring waste management
- Not using a turbine

Recommended Starter Setup

- 5×5×5 reactor
- 4-6 fuel assemblies
- Burn rate ~1.0 mB/t
- Connected industrial turbine
- Infinite water source

Guide

[AllTheModium Ores Guide](#)

ATM10 features a tier progression system of unique ores beyond Netherite. This guide shows you where to find them, and how to use them.

Guide

[SiriusMC's ATM Star Guide](#)

SiriusMC's guide to obtaining the ATM star.

Introduction

[Introduction](#)

An introduction into ATM10, including how to get started and what mods are featured.