

# AllTheModium Ores Guide | ATM10

ALL THE MODS

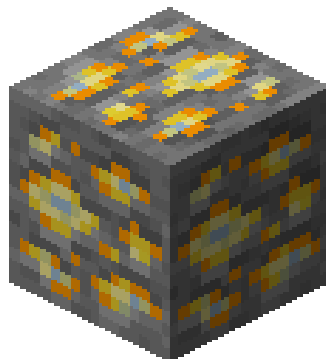
atm10.siriusmc.net

Version · 6.6

ATM10 features a tier progression system of unique ores beyond Netherite, each found in different dimensions and requiring increasingly powerful tools to mine. The progression order is:

**Netherite (Vanilla) → AllTheModium → Vibranium → Unobtainium**

## AllTheModium



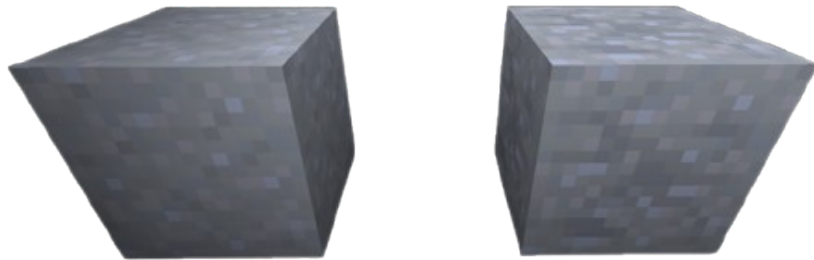
AllTheModium ore can be found in the [Deep Dark](#) biome in the Overworld, or in the Mining dimension added by [Aroma1997's Dimensional World](#). In the Deep Dark, look on the walls and roof of caverns or within [Ancient Cities](#). In the Mining dimension, focus on the [Deepslate layer](#).

- Requires [Netherite](#) quality tools or better to mine.
- Found in the [Deep Dark](#) biome in the Overworld.
- Found in the Mining dimension at the [Deepslate layer](#).

## Finding the AllTheModium Smithing Template

---

Use a [Brush](#) on [Suspicious Clay](#) blocks inside [Ancient Cities](#). Suspicious Clay looks similar to regular clay but has a slightly different texture.



## Smithing Upgrade

---

Slot	Item
Template	AllTheModium Smithing Template
Gear	Netherite tool or armour piece
Material	AllTheModium Ingot



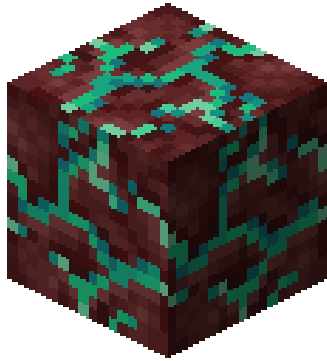
## Duplicating the Template

---

Ingredient	Amount
AllTheModium Smithing Template	1
Netherite Ingot	7
Deepslate	1



## Vibranium



Vibranium ore can only be found in the [Crimson Forest](#) and [Warped Forest](#) biomes of the Nether. The Crimson Forest is characterised by red fungi and hoglins, while the Warped Forest is teal-coloured and generally safer to explore. Vibranium spawns at high Y altitudes; look near the Nether ceiling rather than the floor.

- ❑ Requires AllTheModium quality tools or better to mine.
- ❑ Found in the [Crimson Forest](#) and [Warped Forest](#) biomes of the Nether.
- ❑ Spawns at high Y altitudes, normally near the ceiling.

### Finding the Vibranium Smithing Template

Use a Brush on [Suspicious Soul Sand](#) inside [Bastion Remnants](#) in the Nether. Bastions are large blackstone fortress structures home to Piglins and Piglin Brutes. Bring gold armour to avoid aggravating the Piglins. Suspicious Soul Sand can be found on the floors and in treasure rooms.



## Smithing Upgrade

Slot	Item
Template	Vibranium Smithing Template
Gear	AllTheModium tool or armour piece
Material	Vibranium Ingot

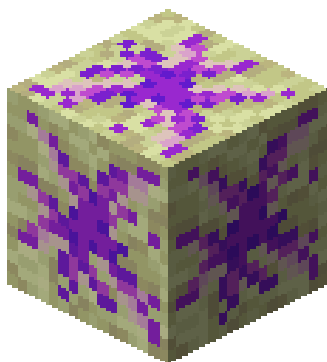


## Duplicating the Template

Ingredient	Amount
Vibranium Smithing Template	1
AllTheModium Ingot	7
Ancient Stone	1



## Unobtainium



Unobtainium ore can only be found in the [End Highlands](#), the outer islands of The End dimension. To reach the outer islands, travel through the End Gateway portal that appears after defeating the Ender Dragon, or fly away from the main island. The Highlands biome is identifiable by its elevated terrain and chorus plants. Unobtainium spawns within the island's crust at any Y level, so you can find it by searching on the surface.

- Requires Vibranium quality tools or better to mine.
- Found in the [Highlands biome](#) within [The End](#).
- Spawns within the island's crust at any Y level.

### Finding the Unobtainium Smithing Template

Loot chests within the **Library of Dungeons**, large underground dungeon structures found in The Other dimension. Explore thoroughly as chests can be spread across multiple rooms within the structure.

### Smithing Upgrade

Slot	Item
Template	Unobtainium Smithing Template
Gear	Vibranium tool or armour piece
Material	Unobtainium Ingot



## Duplicating the Template

Ingredient	Amount
Unobtainium Smithing Template	1
Vibranium Ingot	7
End Stone	1



## Other Methods of Obtaining These Ores

### Method A: Laser Drills

Using [Laser Drills](#) and [Laser Bases](#) from [Industrial Foregoing](#) with the correct [Laser Lens](#) in the correct biomes can generate the respective ore for that biome.

### Method B: Mystical Agriculture

Seeds from [Mystical Agriculture](#) can produce [Essence](#) of these ores, which can then be converted into ingots.

### Method C: Productive Bees

Bees from the [Productive Bees](#) mod can produce combs of these ores, which can be converted into ingots using a centrifuge.

#### Guide

##### [SiriusMC's ATM Star Guide](#)

SiriusMC's guide to obtaining the ATM star.

#### Guide

##### [Mekanism Fission Reactor](#)

A helpful guide on creating a fission reactor from the mod Mekanism.

#### Introduction

##### [Introduction](#)

An introduction into ATM10, including how to get started and what mods are featured.

Revision #15

Created 2025-12-15 03:46:06 UTC by Teddy040

Updated 2026-05-22 18:22:03 UTC by Teddy040